



# KIP 7170

*Ultimate - Multi-Touch Performance*

## A new generation of wide format functionality

www.copyquality.com **SYSTEM SOFTWARE K**

The productivity of the KIP 7170 system is designed to satisfy the most demanding needs of decentralized users and may also be expanded as a centralized network printer.

- CIS Scanning - with Real-Time Thresholding Technology
- Energy Star Qualified - Economical & Ecological
- Total Control of the Copy, Print & Scan Process
- Workgroup Walk-Up Simplicity



## SMART MULTI-TOUCH CONTROLS

All system functions for the KIP 70 Series are performed through an integrated, 12" multi-touch tablet-like color display to copy, print and scan both color and B&W documents.



### Multi-Function System

- Space saving integrated top stacking
- Color copies & print directly to inkjet
- Scan documents into a wide range of B&W and color files
- Print from and scan to cloud storage or integrated USB port
- Real-time previews for maximum quality



### Production System with Stacking

- Direct prints to stack on top or rear
- Create color copies directly to inkjet printers
- Scan to a wide range of file formats
- Real-time copy and scan previews
- USB printing and scanning support
- On-screen copy, print & scan previews



### Production System with Folding

- Precision document folding
- Operates at full print engine speed
- Ultra-quiet operation
- Online and offline folding
- Fully integrated with KIP software
- Compact footprint

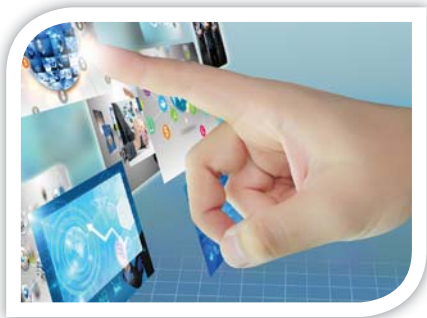


## Smart Multi-Touch Controls

- One touch access to system features in 12 languages
- Instantaneously responsive 12" color display
- Intuitive feature selection for easy operation



Space Saving Design



## Comprehensive Software Apps

- Print management suite synergy
- Functional continuity across all KIP applications
- All available for free download from [www.KIP.com](http://www.KIP.com)



## Integrated Production Systems

- Fully integrated folding & stacking
- Easy print set handling & distribution
- Two way communications for intelligent operation



## Mobile Cloud Convenience

- Use any phone, tablet, laptop or PC
- No need to install drivers or software applications
- Integrated with OneDrive®, Google Drive, Dropbox, Box.com, Microsoft® SharePoint & Microsoft® Office 365 Online™



## Eco Friendly System

- 97% product recyclability
- 100% toner efficient - no waste toner
- Promotes environmental health & sustainability